



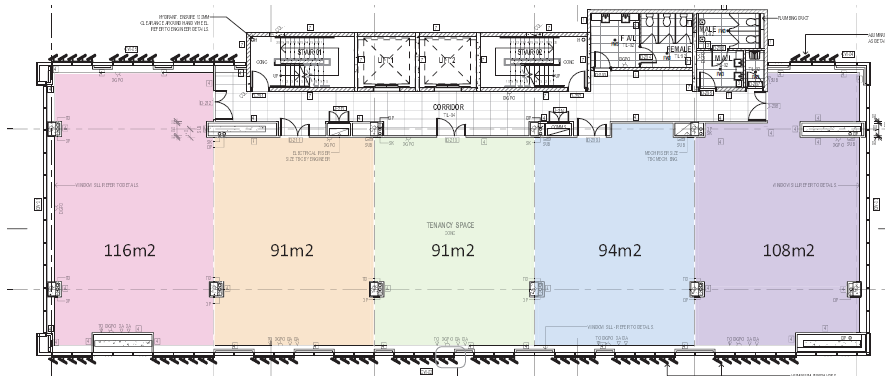
EXPRESSION OF INTEREST COMMERCIAL TENANCY SPACE

Proposed Commercial Building, Point Cruz

The Solomon Island National Provident Fund (SINPF) is calling for reputable prospective Tenants for the proposed New Commercial Building on the Old Home Finance Site (Opposite Bulk Shop Building) Hibiscus Avenue, Honiara. The Building comprises secured Carpark level, Podium Commercial & Retail Level and 4 Levels of Premium Commercial Office Space serviced by 2 Lifts.

The Building & Available Spaces

- Retail to Ground Floor and 4 levels of Premium Commercial Office Space and Secured Private Carpark spaces with 2 x Lifts and Backup power and Backup water.
- Tenants could take an Entire Floor for 'Exclusive Use' which is over 500m² or the Floors at each level can be broken into 5 Spaces (2 x 91m², 1 x 94m², 1 x 108m² and 1 x 116m²)
- Bespoke Fit outs and Special Requirements may be accommodated at this early stage to secured Tenants upon payment of a Bond
- Expected Completion is **March 2025**



Typical Floor Plate

The Expression of Interest for Tenancy Space should be referenced as SOLCO OFFICE SPACE and include

- Company Name & Contact Person, Space Requirements and any other Special Requirements
Please Send Details and Requests to:
 - The Manager of Properties, Solomon Islands National Provident Fund
Attention – Mr Kenneth Bo'o
Or email to -- kboo@sinpf.org.sb

Note - A Holding Deposit Form will be sent out to Proposed Tenants once the expressions are reviewed.

Expression of Interest Period

The Period will close at 5.00PM on Friday, February 24th, 2023. (Solomon Island Time)